

2500-3500 SF  
AVAILABLE

# KILLARNEY OAKS

227 S Orlando Ave., Winter Park, FL 32789



## PROPERTY HIGHLIGHTS

- 🌿 Parking garage located on 17-92 and Morse
- 🌿 2nd Floor - 2,500 - 3,500 SF (Divisible)
- 🌿 Asking Rate: \$30.00/SF NNN
- 🌿 3.75/1,000 s.f. on-site and street parking available
- 🌿 Adjacent to walkable amenities in the 17-92 corridor and Winter Park Core.
- 🌿 Large-illuminated pylon signage available.



**Janet Galvin**  
O 407 278 5535 x 404  
C 407 484 9562  
janet@archonca.com

100 East Central Blvd, Suite #2  
Orlando, FL 32801  
P 407 278 5535 | F 407 545 2844  
[www.archonca.com](http://www.archonca.com)

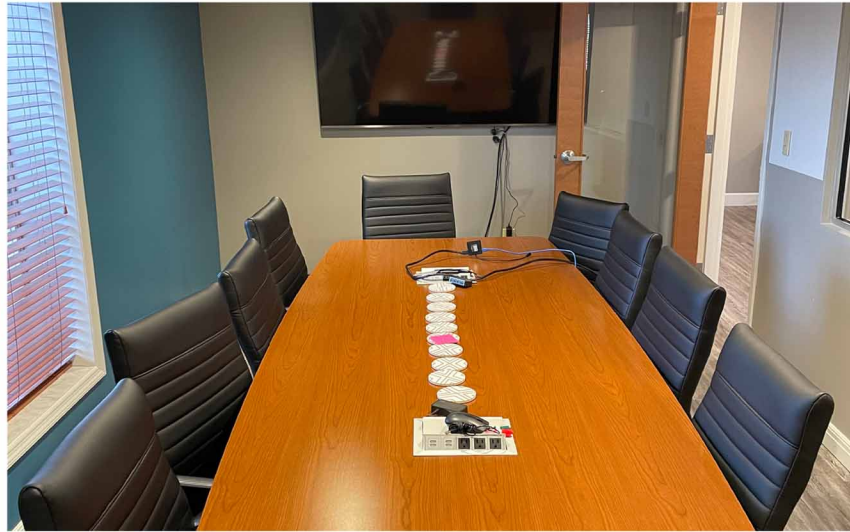
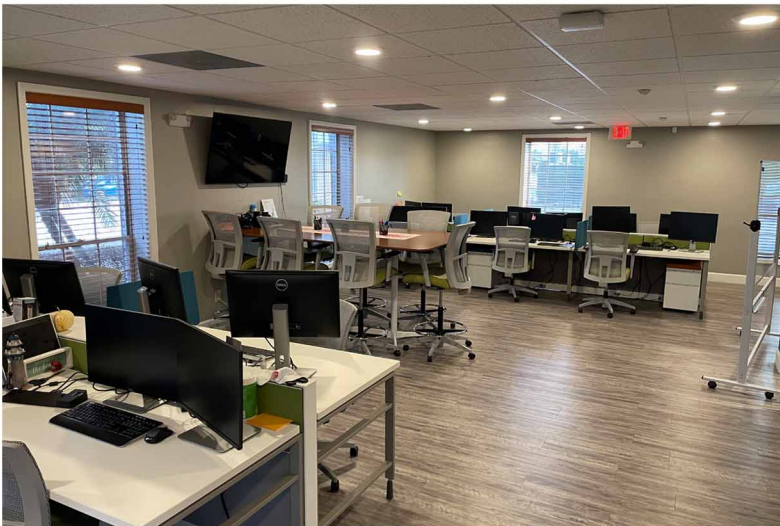
Stay in the know. Click to follow us on social media.



2500-3500 SF  
AVAILABLE

# KILLARNEY OAKS

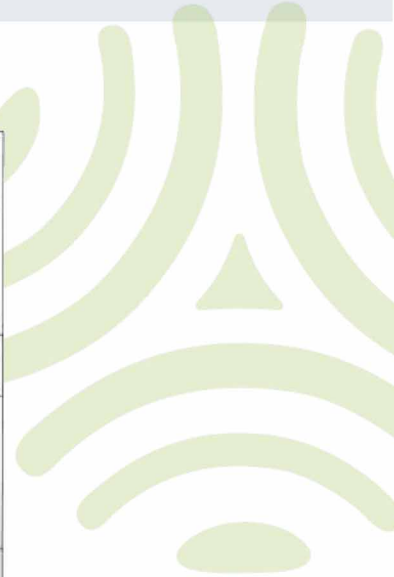
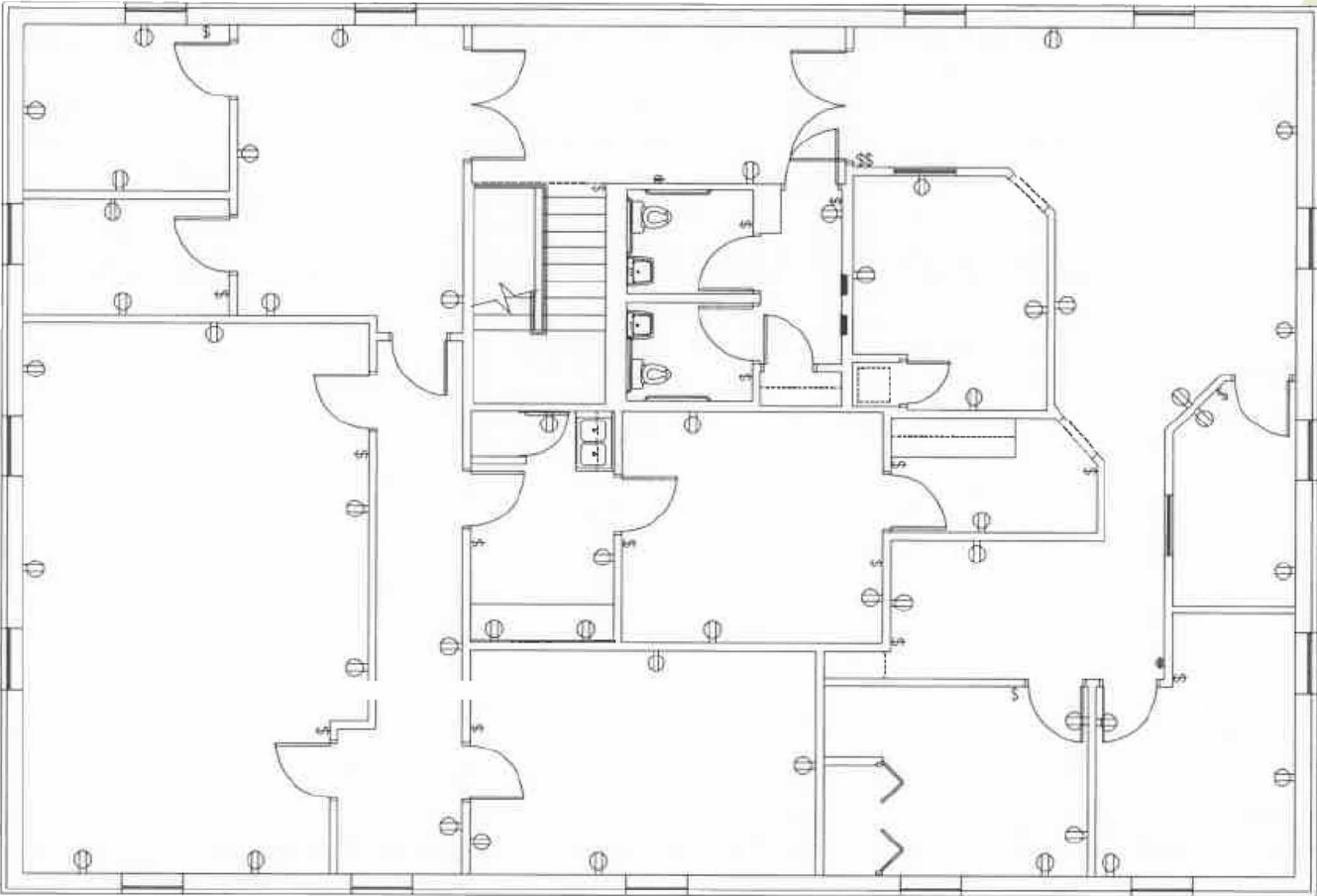
227 S Orlando Ave., Winter Park, FL 32789



2500-3500 SF  
AVAILABLE

# KILLARNEY OAKS

227 S Orlando Ave., Winter Park, FL 32789



**ARCHON**  
COMMERCIAL ADVISORS

**Janet Galvin**  
O 407 278 5535 x 404  
C 407 484 9562  
janet@archonca.com

100 East Central Blvd, Suite #2  
Orlando, FL 32801  
P 407 278 5535 | F 407 545 2844  
[www.archonca.com](http://www.archonca.com)

Stay in the know. Click to follow us on social media.

