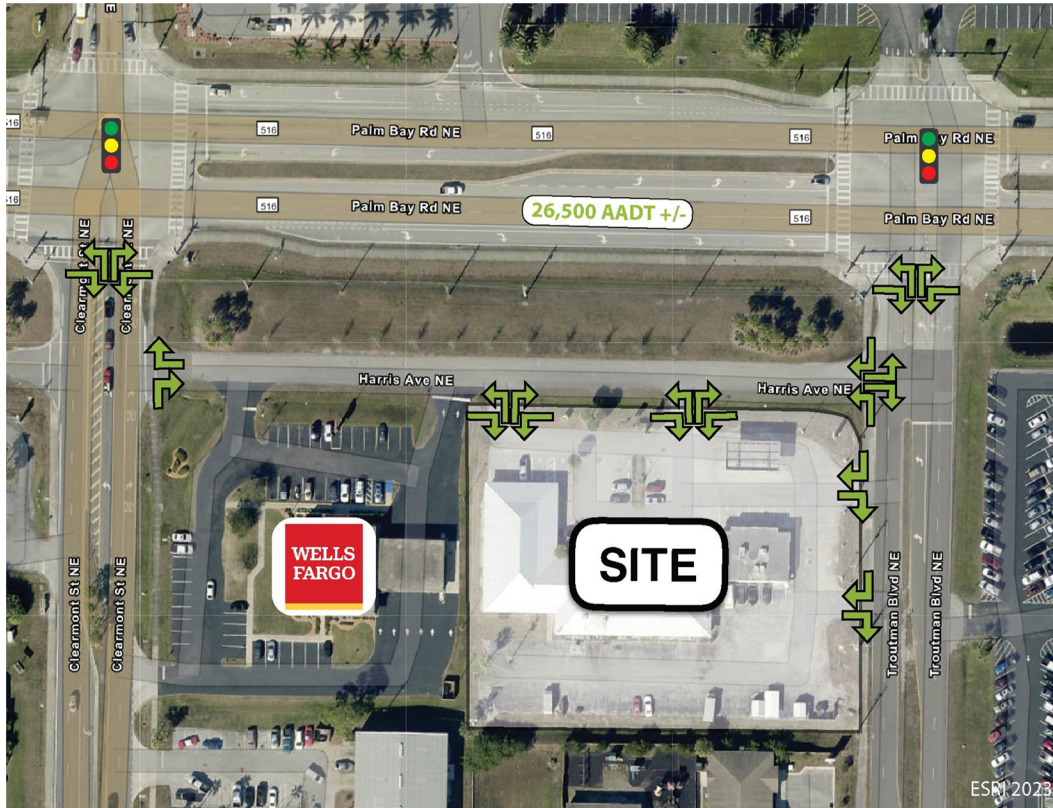


Available

# MULTI-UNIT RETAIL OPPORTUNITY

22820 Harris Ave NE, Palm Bay, FL



## PROPERTY HIGHLIGHTS

-  **Building Size:** 2,360 SF
-  **Land Size:** 1.87 acres
-  **Traffic Counts:** 26,500 AADT
-  **Zoning:** Retail Multi-Unit

DEMOGRAPHICS	3 Mile	5 Mile	10 Mile
Est. Population (2022)	57,096	122,631	290,096
Average HH Income	\$52,804	\$65,310	\$69,605
Number of Businesses	2,580	7,024	15,292
Daytime Employees	21,479	66,812	119,580

Available

# MULTI-UNIT RETAIL OPPORTUNITY

22820 Harris Ave NE, Palm Bay, FL



**ARCHON**  
COMMERCIAL ADVISORS

**Josh Busby**  
O 407 278 5535  
C 407 437 1632  
josh@archonca.com

100 East Central Blvd, Suite #2  
Orlando, FL 32801  
P 407 278 5535 | F 407 545 2844  
[www.archonca.com](http://www.archonca.com)

Stay in the know. Click to follow us on social media.

