

Available

FORMER LONG JOHN SILVERS

1960 E Semoran Blvd., Apopka, FL 32703



PROPERTY HIGHLIGHTS

- 🌿 **GLA:** 40,108 sqft (+/-), 0.92 acres (Land) / 2,683 SF (Building)
- 🌿 **Municipality:** City of Apopka
- 🌿 **County:** Orange
- 🌿 **Space Available:** 2,683 SF Freestanding Building w/ Drive Thru
- 🌿 **Lease Type:** NNN
- 🌿 **Other Notable Tenants:** Pep Boys
- 🌿 **Traffic Counts:** 60,059 Vehicles Per Day

DEMOGRAPHICS

	1 Mile	3 Mile	5 Mile
Total Population	12,965	73,348	180,119
Households	4,458	26,092	66,933
Average HH Income	\$64,469	\$73,703	\$71,109
Total Employees	4,286	23,077	60,719



Janet Galvin
O 407 278 5535 x 404
C 407 484 9562
janet@archonca.com

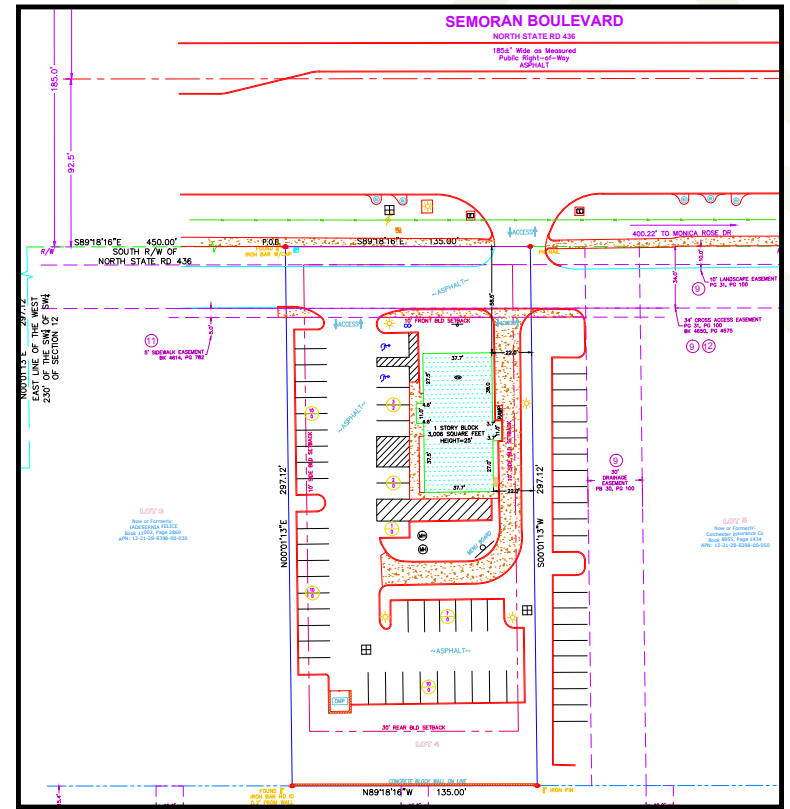
100 East Central Blvd, Suite #2
Orlando, FL 32801
P 407 278 5535 | F 407 545 2844
www.archonca.com

Stay in the know. Click to follow us on social media.



FORMER LONG JOHN SILVERS

1960 E Semoran Blvd., Apopka, FL 32703



FORMER LONG JOHN SILVERS

1960 E Semoran Blvd., Apopka, FL 32703



Archon Commercial Advisors is an affiliate of [SITE SOURCE](#)